



MONTHLY DISPATCH

NOVEMBER 2023



CONTENTS

At A Glance	1
Samvardhan - Breed Preservation	2
Deepavali Celebration In Anganwadi	3
Deepavali Celebration In Balwadi	4-5
School Of Sustenance	6-8
Sutr Santati	9
Memberships	10
Support Projects And Campaigns	11



AT A GLANCE

With enthusiasm and dedication, we are building a strong educational framework that will shape students' future

In November, we continued our commitment to making a positive impact on the lives of those in need. We supported **280 bovines and 8 Gopalaks** with dry feed In **Igatpuri belt of Nashik**. Celebrating Deepavali with Balwadi and Anganwadi students by **distributing** books. Celebrating the spirit of Deepavali with the artisans of tribal villages across India by exhibiting their products at our corporate partners' premises. We conducted **8 exhibitions**, and around **200 Artisans** benefitted from this initiative.

OUTREACH

0.8
Tons of Dry
Feed

280
Bovines

220
Students

8
Exhibitions

1500
Participants

200
Artisans
Supported



SAMVARDHAN

Breed Preservations

Keeping Mahatma Gandhi's principle in mind, we aim to drive villages towards economic self-sufficiency supported by agriculture and cottage industry. Partnering with social activists and aware citizens, we impart training in organic farming, breed preservation and ethics of good governance.



DANGI BREEDS SURVIVAL

Under our initiative 'Sowing the seeds,' SAMVARDHAN aims at preserving our indigenous breeds.



FEED DISTRIBUTION

0.8 Tons of nutritional dry feed was distributed to Dangi Breed at the **Igatpuri** block in Nashik. The feed was distributed on the auspicious occasion of Gopastami in the month of November.



GOPALAKS SUPPORTED

8 Gopalaks and 280 bovines are benefitted in this cause. After consuming nutritional feed, the bovines are producing more milk than before.



LESSONS FOR LIFE

Deepavali Celebrations In Anganwadi

Celebrating Deepavali by distributing activity books to our Anganwadis. On the occasion of **Mr Harshit Sahu's** birthday, he donated **220 books** to students. The book has all the fun activities like tracing and colouring. This will keep kids engaged during holidays with some fun learning.

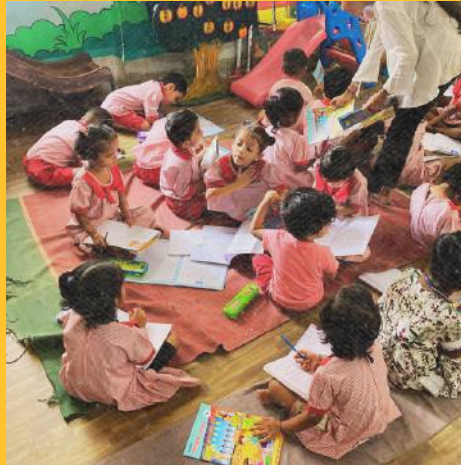


LESSONS FOR LIFE

Deepavali Celebrations In Balwadi

Celebrating Deepavali by distributing activity books to our Balwadi schools. On the occasion of **Mr Harshit Sahu's** birthday, he donated **220 books** to students.

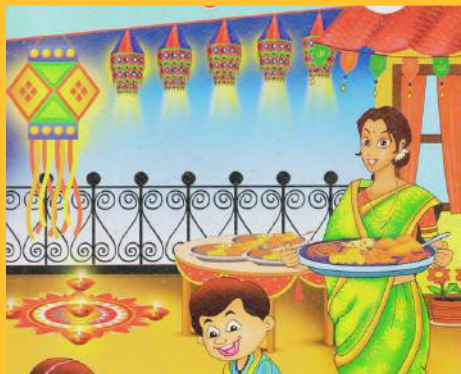
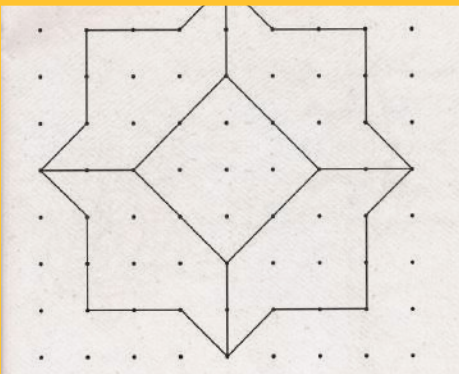
Kavde Math Banganga Balwadi



Shivaji Nagar Balwadi



Glimpse of the Book - Deepavali Gruhpath



LESSONS FOR LIFE

Deepavali Celebrations In Balwadi

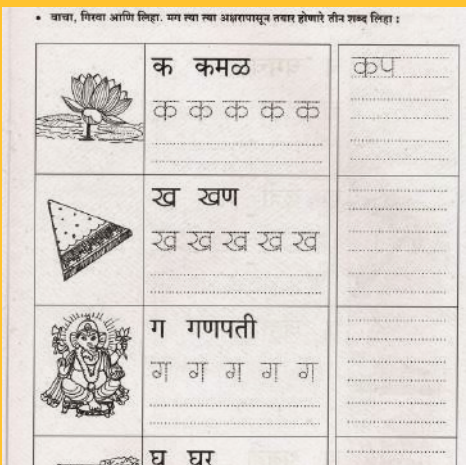
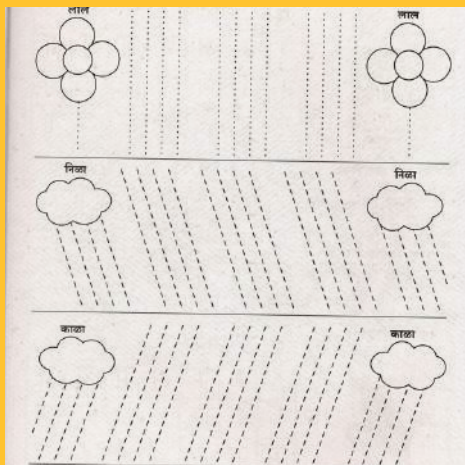
Sainath Nagar Balwadi - Ghatkopar



Sitaram Mills Compound Balwadi - Parel



Glimpse of the Book - Deepavali Gruhpath



SCHOOL OF SUSTENANCE

Celebrating Culture AT Corporate Exhibitions

Celebrating the spirit of Deepavali with the artisans of tribal villages across India by exhibiting their products at our corporate partners' premises. We conducted **8 exhibitions** with **1500 participants** and around **200 artisans** benefitted through this initiative.

Exhibition at Edelweiss - Kurla



Exhibition at Godrej Campus - Vikhroli



SCHOOL OF SUSTENANCE

Celebrating Culture AT Corporate Exhibitions

Exhibition at Travelex- Malad



Exhibition at Centrum - Mumbai



Exhibition at Nehru Centre - Worli



SCHOOL OF SUSTENANCE

Celebrating Culture AT Corporate Exhibitions

Exhibition at Bombay Stock Exchange - Mumbai



Exhibition at IMC - Churchgate



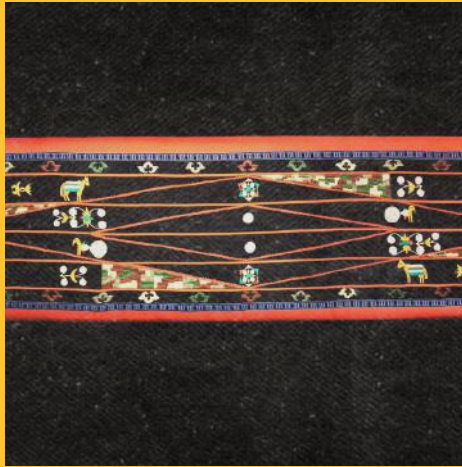
Exhibition at KEC - Mumbai Central



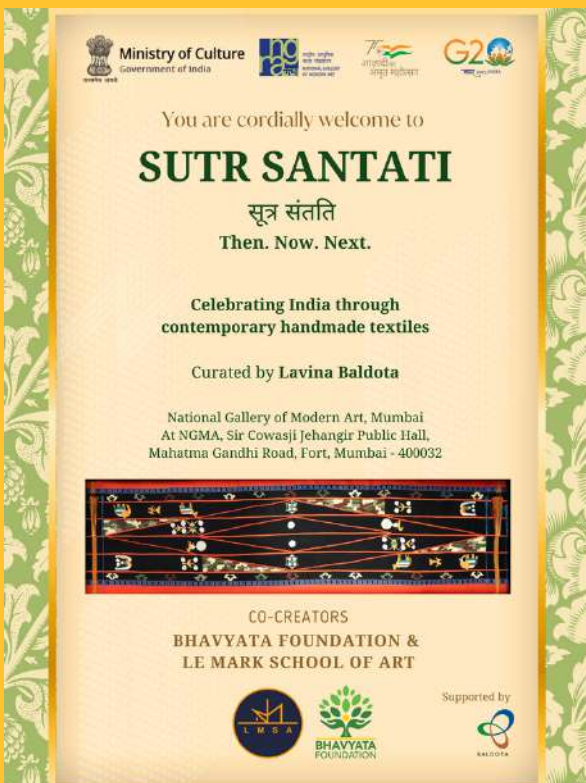
BRIDGE FOR ARTISANS

Sutra Santati Art Exhibitions

Following the remarkable success at Delhi and international debut at Melbourne, the captivating exhibition '**Sutr Santati: Then. Now. Next**, at the **National Gallery of Modern Art (NGMA) in Mumbai**. The show features around **125 commissioned pieces** meticulously crafted by **75 prominent artisans**, craftspeople, designers, and artists, thoughtfully unveiling the profound legacy of Indian textiles & art. The grand opening ceremony was eloquently graced by the **esteemed actress Vidya Balan**.



Bhavyata Foundation x Lemark School of Art PRESENTS 4 CURATED MASTERPIECES.



You are cordially invited to the **Sutr Santati Exhibition**, taking place from **November 19th, 2023, to January 7th, 2024**, at the **National Gallery of Modern Art (NGMA)** in Mumbai. Join us between **11 am to 7 pm** to witness a splendid showcase of textile art featuring masterpieces in **Patola Weave, Tangaliya Weave, Paithani weave, and Manipuri Embroidery**.

THERE SHALL BE A GUIDED WALKTHROUGH OF ABOUT 1 HOUR. THOSE WHO WISH TO ENROL, KINDLY FILL FORM WITH THE LINK:

Interested

MEMBERSHIPS

Bhavyata Foundation Membership program is aimed at creating society participation in the upliftment of communities in need. In doing so, they also receive utilities as giftings in return for their kindness.



Patron Member ₹ 5000

Each member receives gifts sourced from Artisans, Women Self Help Groups, Farmers and Beneficiary groups



Associate Member ₹ 10000

Each Associate member receives gifts sourced from Artisans, Women Self Help Groups, Farmers and Beneficiary groups.



Affiliate Member ₹ 25000

Each Affiliate member receives gifts sourced from Artisans, Women Self Help Groups, Farmers and Beneficiary groups.



Family Member ₹ 35000

Each Family member receives gifts sourced from Artisans, Women Self Help Groups, Farmers and Beneficiary groups

SUPPORT PROJECTS & CAMPAIGNS

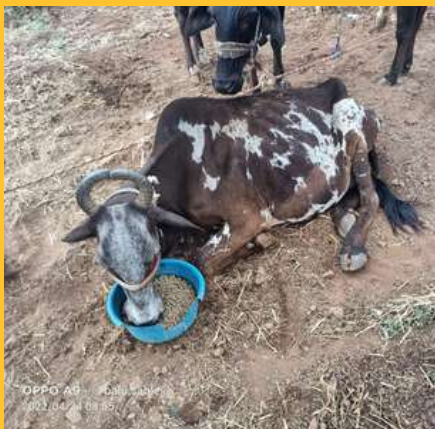
DONATE FOR PRESCHOOLS



Let's welcome 2024
for Our Little Minds by
donating snacks and
books.

[Donate Now](#)

SUPPORT US



BREED PRESERVATION

Support Dangi breed
from the Nashik district
with nutritional feed.

[Donate Now](#)



BRIDGE FOR ARTISANS

Shop for cause and
support local artisans

[Shop Now](#)



MATA AROGYA ABHIYAN

Support expectant
mothers for their
overall well being

[Donate Now](#)

Address

D-5/35, Chittaranjan Nagar CHS,
Rajawadi, Vidyavihar (E),
Mumbai- 400077

Contact

+91 7506882281

Website

www.bhavyatafoundation.com
info@bhavyatafoundation.com