

MONTHLY DISPATCH

MAY - 2025

Contents

- 01** At A Glance
- 02** Samvardhan - Breed Preservation
- 03** Mata Arogya Abhiyan-MAA
- 04** Shrivan Wadi Project - School of Sustenance
- 10** Project Vidyavan - School of Sustenance
- 12** Internship Programme
- 13** Membership
- 14** Support Projects And Campaigns

IN SUMMARY

OUTREACH

5

Balwadi's

16

Anganwadi's

28

Preschools

1583

Students

260

Bovines

720

kgs of Feed



On May 25, Bhavyata Foundation extended its **support to livestock feeding in Igatpuri** during the summer season, reinforcing our commitment to community welfare. **Our "Adopt an Anganwadi" project in Ghatkopar West has been successfully completed**, creating a nurturing, learning-enabled environment for underprivileged children. Simultaneously, we continue to create meaningful **impact** in rural **Maharashtra** (Palghar District) and urban Mumbai by **strengthening early childhood education**. Through our adopted Anganwadis, we reach over **300 children annually**. Additionally, the Foundation ensures access to quality preschool **education for 1,583 underprivileged children** across BMC schools in Mumbai. **Our ongoing environmental initiative, Project Vidyavan, in Kalina has led to the plantation of over 5,000 native trees**, supporting ecological restoration. We are also proud to witness **growing participation from interns across diverse academic fields**, who are contributing actively to our grassroots initiatives.

SAMVARDHAN

Breed Preservation



Location: Igatpuri, Maharashtra



Samavardhan is an initiative focused on the preservation and promotion of indigenous bovine breeds, suited to specific agroclimatic zones, to ensure the sustainability of local agriculture and dairy-based livelihoods.



FEED DISTRIBUTION

Amidst the scorching summer heat and scarce resources, we've stepped in to support cows in need by distributing 0.8 tons of dry nutritional fodder.

Supported: 10 Families



DANGI BREEDS SURVIVAL

SAMVARDHAN, through its 'Sowing the Seeds' initiative, aids gopalaks in preserving indigenous breeds amid challenges posed by limited grazing pastures and inadequate feed resources.

260 Bovines (Dangi Breed)



GOPALAKS SUPPORTED

10 Gopalaks and 260 bovines benefitted, resulting in increased milk production after consuming nutritional feed. The Gopalaks then process the milk into condensed form sold in the marketplace, providing livelihoods.


Thanks To our Supporters
Sangita Agarwal Ji, Rajni Singhal Ji and
Shilesh Dalal ji

MAA

Mata Arogya Abhiyan

Care for Pregnant Women



 **Kamraj Nagar, Ghatkopar,
Mumbai**



**10
Expectant
Mothers**



Project Mata Arogya Abhiyan (MAA) is a key initiative by Bhavyata Foundation to support the health and well-being of pregnant women in India. It provides essential care, education, and nutrition to ensure safe pregnancies and healthy births.



In May 2025, Bhavyata Foundation conducted a maternal health session at Kamraj Nagar, featuring Garbh Sanskar insights, yoga, meditation, and grocery distribution to support pregnant women's health and well-being.



Garbh Sanskar counselling session focusing on pregnancy meditation to ensure calmness, mental wellness, and a nurturing environment for the unborn child.



A Garbh Sanskar counselling session was conducted in Kamraj Nagar by Rajani Pamnani, guiding expectant mothers through traditional practices, mental well-being, and prenatal bonding techniques.



**Swasth Mata,
Sukhi Parivaar**



Distributed grocery kits containing essential items:

- 1.1KG Wheat Flour
2. 1KG Jaggery
3. 250gm Moong Dal

4. 200gm Black raisin
5. 200gm Badam
6. 250gm Roasted Chana

7. Lal Chana



**Gracious Thanks to
Inner Wheel Club of
Bombay**



**Gracious Thanks to Kirti
Jangra, Sunil Thakur, Arun
AK, Chaitali Chaubal**



SCHOOL OF SUSTENANCE

Shrivan wadi Project



Farmer Profile: Manik Mhasara

Manik Mhasara, a dedicated tribal farmer from Wada, supports his family of five on a minimal income by farming Ragi and rice during monsoon and taking up labor work post-harvest, ensuring his children's education.



Location: Wada taluk, Palghar

Supported By Mr. Pratik Zalavadia



Progress for May 25

Farmer Manik Mhasara reported healthy plant development throughout May. Mogra plants have started flowering well, indicating good growth conditions. A few plants were grazed by an ox, but this minor damage is not expected to affect overall yield, as the plants are showing signs of recovery and will bloom again with continued care and maintenance.



SCHOOL OF SUSTENANCE

Shrivan wadi Project



Farmers profile: Jagan Mhasara

Jagan Mhasara, a resilient tribal farmer from Wada, supports a family of 11 on ₹15,000–30,000 annually, prioritizing his children's education and well-being with unwavering determination despite severe financial challenges and limited resources.



Location: wada Taluk, Palghar

Supported By Dr. Premjeet Madhukar



Progress for May 25

Farmer Jagan Mhasara's plot showed comparatively weaker progress in May. Unlike other farmers, a significant number of his plants were lost due to inadequate care and irregular maintenance. This has affected the overall growth and flowering, with Mogra plants showing minimal development. Timely intervention and improved attention are necessary to restore plant health and avoid further losses.



SCHOOL OF SUSTENANCE

Shrivan wadi Project



Farmers Profile: Manoj Kadu

Manoj Kadu, a dedicated tribal farmer from Wada, supports his family of seven on ₹15,000–30,000 annually, cultivating Ragi and rice during monsoon and working as a laborer afterward, while ensuring his four children attend school.

Location: wada Taluk, Palghar

Supported By Ms. Namrata Zumani



Progress for May 25

Farmer Manoj Kadu has shown commendable progress in his wadi during the month of May. Due to consistent care and regular maintenance, the overall health of his plants remains strong. Mango and cashew trees are thriving well, reflecting good seasonal growth. Mogra plants have also begun flowering steadily, yielding approximately 250 grams per day. His dedicated efforts are clearly contributing to the success of his plantation.



SCHOOL OF SUSTENANCE

Shrivan wadi Project



Farmers Profile: Balu Ghatal

Balu Ghatal, a farmer from Wada, sustains his family of six by cultivating 2.5 acres and working construction jobs off-season, earning modestly while ensuring his children's education and balancing farming with additional labor work.



Location: wada, Palghar

Supported By Ms.Prachi Jhunjhunwala and Family



Progress for May 25

Farmer Balu Ghatal's wadi showed moderate progress during the month of May. While the overall plant health is satisfactory, there is scope for improvement with more consistent care. Mogra plants have begun to flower, and the mango and cashew trees are in stable condition. With increased attention and timely agricultural practices, better growth and yield can be expected in the coming period.



SCHOOL OF SUSTENANCE

Shrivan wadi Project



Farmers profile: Devram watas

Devram Watas, a farmer from Wada, supports his family of four by cultivating crops on 5.5 acres and working construction jobs off-season, earning modestly while ensuring his children's education and meeting household needs despite hardships.



Location: wada, Palghar

Supported By Vashi Parivar Foundation



Progress for May 25

During the month of May, overall plant growth at Shrivan Wadi remained healthy and consistent. Mogra plants showed good flowering, marking seasonal progress. However, a few Mogra plants were partially grazed by an ox. Despite this setback, the plants are resilient and expected to regenerate and bloom again with proper care.



SCHOOL OF SUSTENANCE

Shrivan wadi Project



Location: wada Taluk, Palghar

Farmers Profile: Kamlakar Phuphane

Kamlakar Phuphane, a 69-year-old farmer from Wada, supports his family of 11 by cultivating 2.5 acres and working construction jobs off-season, earning modestly while ensuring his grandchildren's education and managing both farming and labor work.

Supported By Vashi Parivar



Progress for May 25


Farmer Kamlakar Phuphane's wadi demonstrated steady growth throughout May. The plants are developing well under his attentive care. Mogra plants have started flowering, and the overall condition of the mango and cashew trees is healthy. With continued maintenance and regular monitoring, his wadi is expected to yield promising results in the coming months.



SCHOOL OF SUSTENANCE

Vidyavan Project



 Location: Kalina Mumbai University

Vidyavan promotes Miyawaki Forests for urban afforestation using native species like Neem, Banyan, Peepal, Arjun, and Amla. These indigenous trees restore biodiversity, improve air quality, and create self-sustaining green spaces for healthier urban environments.

Supported By Ajmera Realty and Infra Mumbai



A plantation drive involving over 5,000 saplings has been successfully conducted at Kalina, Mumbai University. This initiative, dedicated to fostering environmental sustainability, has been generously supported by Ajmera Realty and Infra India Ltd.



GOAL  **2800** Saplings Farmer Families **7** **16.8 MT** CO2 Offset



**LIVELIHOOD
EMPOWERMENT**

**ECOLOGICAL
RESTORATION**

**CLIMATE
RESILIENCE**

**SUSTAINABLE
LIVING**

Seven tribal farmer families from Wada, Palghar, earn ₹30000–50,000 yearly, farming 2–5 acres of land, sustaining their livelihood through rice in monsoon and doing odd jobs in brick kilns during non monsoon period.

Saplings, Sustainability & Security

Shrivan Wadi (Orchard of Prosperity) empowers families by planting saplings across their **0.5 acres**, building long-term prosperity through nature-based solutions in rural communities.

DONATE NOW



INR 95 PER SAPLING

INR 38000 PER FAMILY

**IN WADA TALUK, DISTRICT
PALGHAR
STATE MAHARASHTRA**

INTERNSHIP PROGRAM

Volunteering by College
Students

College: NMIMS



In April 2025, our organization had the privilege of hosting exceptional interns who made noteworthy contributions to our initiatives. Vivek Singh played a vital role in Program Management, while Sahas and Manav significantly enhanced our Social Media efforts. Their dedication, creativity, and professionalism greatly supported our ongoing work. We extend our heartfelt gratitude to ConnectFor for connecting us with such talented and committed individuals.



Membership

Bhavyata Foundation Membership program is aimed at creating society participation in the upliftment of communities in need. In doing so, they also receive utilities as giftings in return for their kindness.



Patron Member

₹ 5000

Each member receives gifts sourced from Artisans, Women Self Help Groups, Farmers and Beneficiary groups



Associate Member

₹ 10000

Each Associate member receives gifts sourced from Artisans, Women Self Help Groups, Farmers and Beneficiary groups.



Affiliate Member

₹ 25000

Each Affiliate member receives gifts sourced from Artisans, Women Self Help Groups, Farmers and Beneficiary groups.



Family Member

₹ 35000

Each Family member receives gifts sourced from Artisans, Women Self Help Groups, Farmers and Beneficiary groups

SUPPORT PROJECTS & CAMPAIGNS

Support us to build
the future of our
preschool students

Support Us

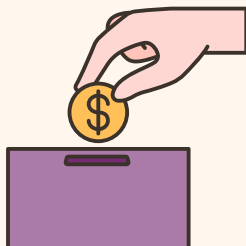


PLANT A CARETAKER

Ecology becomes empowering
when the preservation of
nature is coupled with
prosperity of communities.

Donate now to save our
environment.

[Donate Now](#)



ADOPT AN ANGANWADI

Support Preschool
Education for
Underprivileged

[Donate Now](#)



DONATE FOR PRESCHOOLS



[Donate Now](#)



MATA AROGYA ABHIYAN

Support expectant
mothers for their
overall well being

[Donate Now](#)

Address

D-5/35, Chittaranjan Nagar CHS,
Rajawadi, Vidyavihar (E),
Mumbai- 400077

Contact

+91 7506882281

Website

www.bhavyatafoundation.com
info@bhavyatafoundation.com