



MONTHLY DISPATCH

APRIL - 2025

Contents

- 01 At A Glance
- 02 Samvardhan - Breed Preservation
- 03 Mata Arogya Abhiyan-MAA
- 04 Adopt an Anganwadi
- 07 Lesson for Life - Preschool Education
- 10 Shrivan Wadi Project - School of Sustenance
- 16 Project Vidyavan - School of Sustenance
- 17 Internship Programme
- 18 Membership
- 19 Support Projects And Campaigns

OUTREACH

5

Balwadi's

16

Anganwadi's

28

Preschools

1583

Students

260

Bovines

720

kgs of Feed



In May-25, Bhavyata Foundation supported to feed for **livestock in Igatpuri** during the winter, fulfilling our commitment to community welfare. Our **"Adopt an Anganwadi" project in Ghatkopar West is completed**, creating a learning-enabled environment for underprivileged children. Concurrently, the Foundation continues to impact **rural Maharashtra**(Palghar District) and urban Mumbai communities in early childhood education, impacting more than **300+** children annually through adopted **Anganwadis**. Furthermore, the foundation provides access to quality education for **1583 underprivileged** preschool children in BMC schools in Mumbai.

SAMVARDHAN

Breed Preservation



Location: Igatpuri, Maharashtra



Samavardhan is an initiative focused on the preservation and promotion of indigenous bovine breeds, suited to specific agroclimatic zones, to ensure the sustainability of local agriculture and dairy-based livelihoods.



DANGI BREEDS SURVIVAL

SAMVARDHAN, through its 'Sowing the Seeds' initiative, aids gopalaks in preserving indigenous breeds amid challenges posed by limited grazing pastures and inadequate feed resources.

260 Bovines (Dangi Breed)

FEED DISTRIBUTION

Amidst the scorching summer heat and scarce resources, we've stepped in to support cows in need by distributing 0.8 tons of dry nutritional fodder.

Supported: 10 Families



GOPALAKS SUPPORTED

10 Gopalaks and 260 bovines benefitted, resulting in increased milk production after consuming nutritional feed. The Gopalaks then process the milk into condensed form sold in the marketplace, providing livelihoods.


Thanks To our Supporters
Sangita Agarwal Ji, Rajni Singhal Ji and
Shilesh Dalal ji

MAA

Mata Arogya Abhiyan

Care for Pregnant Women



 **Kamraj Nagar, Ghatkopar,
Mumbai**



**15
Expectant
Mothers**



Project Mata Arogya Abhiyan (MAA) is a key initiative by Bhavyata Foundation to support the health and well-being of pregnant women in India. It provides essential care, education, and nutrition to ensure safe pregnancies and healthy births.



Mrs. Rajani Pamnani conducted a counselling session for pregnant women in Kamraj, offering guidance on prenatal care, nutrition, and emotional well-being, aiming to ensure healthier pregnancies and safer deliveries.



Garbh Sanskar counselling session focusing on pregnancy meditation to ensure calmness, mental wellness, and a nurturing environment for the unborn child.



A Garbh Sanskar counselling session was conducted in Kamraj Nagar by Rajani Pamnani, guiding expectant mothers through traditional practices, mental well-being, and prenatal bonding techniques.



Distributed grocery kits containing essential items:

- 1.1KG Wheat Flour
2. 1KG Jaggery
3. 250gm Moong Dal

4. 200gm Black raisin
5. 200gm Badam
6. 250gm Roasted Chana

7. Lal Chana



**Gracious Thanks to
Inner Wheel Club of
Bombay**



**Gracious Thanks to Kirti
Jangra, Sunil Thakur, Arun
AK, Chaitali Chaubal**



ADOPT AN ANGANWADI

Empowering Preschool Education



Jay Santoshi Mata
Anganwadi no.138
Ghatkopar West



**30 children and 5 Pregnant
Women**



Ms. Zarin Havewalla from the Inner Wheel Club of Bombay and Mrs. Kasturi Mahadevia from Warburg Pincus visited our Anganwadi. They interacted warmly with the children and had a pleasant and enriching experience during their visit.

Thanks to support by Innerwheel club of Bombay and Mr. Vishal Mahadevia



ADOPT AN ANGANWADI

Empowering Preschool Education



Pawan Putra SRA Building
Anganwadi No.48



Khar West



The Rotary and Innerwheel Club of Mumbai Jewel upgraded the Anganwadi with an Aquaguard, speakers, learning aids, and colorful paintings, creating a safe, engaging, and supportive learning environment for children.

Gracious Thanks to Rotary and Innerwheel clubs of Mumbai Jewels



ADOPT AN ANGANWADI

Empowering Preschool Education



Shree Krushna SRA Building
Anganwadi No.155



Ghatkopar West



The Anganwadi newly adopted by General Atlantic has been thoughtfully enhanced with classroom paintings, toys, stationery, cupboards, an Aquaguard, and other essential resources to support a vibrant learning environment.

Gracious Thanks to General Atlantic Foundation



LESSONS FOR LIFE

Preschool Education at Balwadi and
Mumbai Public schools



Our pre-primary teachers introduce key concepts through innovative methods such as physical activities, group discussions, and cultural days. These approaches enhance gross motor skills and foster an engaging, inclusive learning environment for children.



Our Goal

We are committed to nurturing healthy, empowered childhoods for the most vulnerable and underprivileged children, providing them with the support, care, and opportunities they need to thrive and succeed.

Overall Development

We focus on children holistic development through divers activities like rhymes, play, group tasks, and interactive games fostering their socio- cognitiveand emotional growth in fun engaging environment



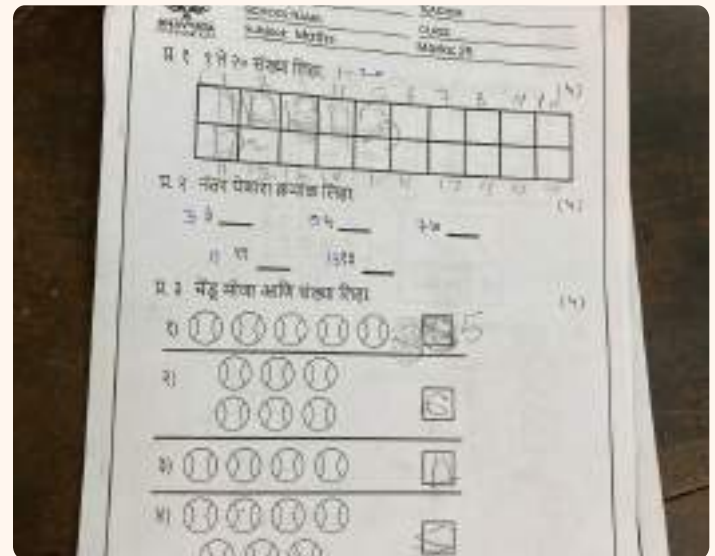
LESSONS FOR LIFE

Preschool Education at Balwadi and
Mumbai Public schools



Maths

Early childhood education in schools emphasizes numeral literacy, laying the foundation for mathematical understanding and proficiency in young learners.



Language

Early childhood education in schools aligns with NEP 2020 by incorporating local languages and fostering cultural preservation and linguistic diversity.

Critical Thinking

Early childhood education focuses on developing critical thinking and cognitive skills, nurturing well-rounded children who can think independently and analytically, laying a strong foundation for their future learning and growth.



LESSONS FOR LIFE

Preschool Education at Balwadi and
Mumbai Public schools



Kawle Math Banganga



Sitaram Mill Compound



Ramabai Sahakar Nagar



Shivaji Nagar



Sainath Nagar

In April 2025, our Balwadi teachers conducted surveys in the areas surrounding their respective schools to identify and reach out to potential students. They engaged with parents, gathered essential data, and facilitated the admission process to ensure maximum enrollment and participation in early childhood education.

SCHOOL OF SUSTENANCE

Shrivan wadi Project



Farmer Profile: Manik Mhasara

Manik Mhasara, a dedicated tribal farmer from Wada, supports his family of five on a minimal income by farming Ragi and rice during monsoon and taking up labor work post-harvest, ensuring his children's education.



Location: Wada taluk, Palghar

Supported By Mr. Pratik Zalavadia



Progress for April 25

Farmer Manik Mhasara's six-month-old plantation of Jasmine, Mango, and Cashew is showing encouraging progress. Jasmine plants have started flowering, while Mango and Cashew saplings are healthy, benefiting from regular care, proper irrigation, and effective pest management practices.



SCHOOL OF SUSTENANCE

Shrivan wadi Project



Farmers profile: Jagan Mhasara

Jagan Mhasara, a resilient tribal farmer from Wada, supports a family of 11 on ₹15,000–30,000 annually, prioritizing his children's education and well-being with unwavering determination despite severe financial challenges and limited resources.



Location: wada Taluk, Palghar

Supported By Dr. Premjeet Madhukar



Progress for April 25

Jagan Mhasara, a farmer from Shrivan Wadi, Wada, Palghar, shows great progress in his six-month-old Jasmine, Mango, and Cashew plantation. With Mr. Premjeet Madhukar's support, healthy growth, blooming, and steady development reflect a promising and sustainable future.



SCHOOL OF SUSTENANCE

Shrivan wadi Project



Farmers Profile: Manoj Kadu

Manoj Kadu, a dedicated tribal farmer from Wada, supports his family of seven on ₹15,000–30,000 annually, cultivating Ragi and rice during monsoon and working as a laborer afterward, while ensuring his four children attend school.

Location: wada Taluk, Palghar

Supported By Ms. Namrata Zumani



Progress for April 25

Manoj Kadu, a farmer from Shrivan Wadi, Wada, Palghar, supported by Vashi Parivar, shows notable progress in his 6-month Jasmine, Mango, and Cashew plantation, with healthy flowering, steady growth, and promising signs of a productive and sustainable future.



SCHOOL OF SUSTENANCE

Shrivan wadi Project



Farmers Profile: Balu Ghatal

Balu Ghatal, a farmer from Wada, sustains his family of six by cultivating 2.5 acres and working construction jobs off-season, earning modestly while ensuring his children's education and balancing farming with additional labor work.



Location: wada, Palghar

Supported By Ms.Prachi Jhunjhunwala and Family



Progress for April 25

With continued support from Vashi Parivar, farmer Balu Ghatal's six-month-old Jasmine, Mango, and Cashew plantation is thriving. Jasmine is flowering, and saplings show steady growth. Proper care, irrigation, and pest control ensure a promising path to sustainable, productive yields.



SCHOOL OF SUSTENANCE

Shrivan wadi Project



Farmers profile: Devram watas

Devram Watas, a farmer from Wada, supports his family of four by cultivating crops on 5.5 acres and working construction jobs off-season, earning modestly while ensuring his children's education and meeting household needs despite hardships.



Location: wada, Palghar

Supported By Vashi Parivar Foundation



Progress for April 25

Devram Watas, a dedicated farmer from Shrivan Wadi, Wada, Palghar, has made notable progress in his six-month-old Jasmine, Mango, and Cashew plantation with support from Vashi Parivar. Jasmine is flowering, and the saplings show steady, promising growth toward a fruitful yield.



SCHOOL OF SUSTENANCE

Shrivan wadi Project



Location: wada Taluk, Palghar

Farmers Profile: Kamlakar Phuphane

Kamlakar Phuphane, a 69-year-old farmer from Wada, supports his family of 11 by cultivating 2.5 acres and working construction jobs off-season, earning modestly while ensuring his grandchildren's education and managing both farming and labor work.

Supported By Vashi Parivar



Progress for April 25


Kamlakar Phuphane, a farmer from Wada, has made commendable progress in his six-month-old Jasmine, Mango, and Cashew plantation with support from Vashi Parivar. Jasmine is flowering, and healthy sapling growth indicates promising harvests and sustainable future yields.



SCHOOL OF SUSTENANCE

Vidyavan Project



 Location: Kalina Mumbai University

Vidyavan promotes Miyawaki Forests for urban afforestation using native species like Neem, Banyan, Peepal, Arjun, and Amla. These indigenous trees restore biodiversity, improve air quality, and create self-sustaining green spaces for healthier urban environments.

Supported By Ajmera Realty and Infra Mumbai

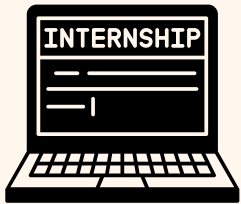


A plantation drive involving over 5,000 saplings has been successfully conducted at Kalina, Mumbai University. This initiative, dedicated to fostering environmental sustainability, has been generously supported by Ajmera Realty and Infra India Ltd.



INTERNSHIP PROGRAM

Volunteering by College
Students



In April 2025, our organization had the privilege of hosting exceptional interns who made noteworthy contributions to our initiatives. Vivek Singh played a vital role in Program Management, while Sahas and Manav significantly enhanced our Social Media efforts. Their dedication, creativity, and professionalism greatly supported our ongoing work. We extend our heartfelt gratitude to ConnectFor for connecting us with such talented and committed individuals.



Membership

Bhavyata Foundation Membership program is aimed at creating society participation in the upliftment of communities in need. In doing so, they also receive utilities as giftings in return for their kindness.



Patron Member

₹ 5000

Each member receives gifts sourced from Artisans, Women Self Help Groups, Farmers and Beneficiary groups



Associate Member

₹ 10000

Each Associate member receives gifts sourced from Artisans, Women Self Help Groups, Farmers and Beneficiary groups.



Affiliate Member

₹ 25000

Each Affiliate member receives gifts sourced from Artisans, Women Self Help Groups, Farmers and Beneficiary groups.



Family Member

₹ 35000

Each Family member receives gifts sourced from Artisans, Women Self Help Groups, Farmers and Beneficiary groups

SUPPORT PROJECTS & CAMPAIGNS

Support us to build
the future of our
preschool students

Support Us

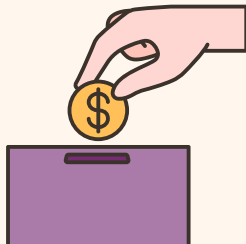


PLANT A CARETAKER

Ecology becomes empowering
when the preservation of
nature is coupled with
prosperity of communities.

Donate now to save our
environment.

[Donate Now](#)



ADOPT AN ANGANWADI

Support Preschool
Education for
Underprivileged

[Donate Now](#)



DONATE FOR PRESCHOOLS



[Donate Now](#)



MATA AROGYA ABHIYAN

Support expectant
mothers for their
overall well being

[Donate Now](#)

Address

D-5/35, Chittaranjan Nagar CHS,
Rajawadi, Vidyavihar (E),
Mumbai- 400077

Contact

+91 7506882281

Website

www.bhavyatafoundation.com
info@bhavyatafoundation.com